

Drilling EDM

Features

- 5 memory sets of sparking parameters. (optional 10 sets)
- Sparking parameter can be fine tuned.
- EDP Function: Point sparking (surface sparking)
- Display mode: DSP, Wear, Depth, End, Pn
- Automatic / manual work piece surface sensing.
- Automatic / manual electrode compensation.
- Metric / inch conversion.



River 3

Optional with titling Head



River 35

Specifications

Model	Unit	River 300	River 350	River 600
Table travel (X,Y axes)	mm	300 x 200	350 x 250	600 x 400
Work table size	mm	350 x 250	600 x 300	600 x 400
Z axis travel	mm	200 (300 Opt.)	300	400
W axis travel	mm	350	450	450
Max. workpiece height	mm	180 (*300 Opt.)	330	400
Max. workpiece weight	kgs	150	250	800
Power input		According to local voltage	According to local voltage	According to local voltage
Max. current	Amp.	25	25	25 (32 / 64 optional)
Power capacity	KVA	3.8	3.8	3.8
Electrode diameter	mm	0.1~3.0	0.1~3.0	0.1 ~ 3.0
Machine net weight	kgs	600	800	1100
Depth / Width / Height	mm	1100 x 1000 x 2000	1100 x 1000 x 2000	1030 x 1630 x 1960

Model	Unit	River 3	River 35
Table travel (X,Y axes)	mm	300 x 200	350 x 250
Work table size	mm	350 x 250	600 x 300
Z axis travel	mm	350	350
W axis travel	mm	200 (*300 Opt.)	200
Max. workpiece height	mm	180 (*300 Opt.)	330
Max. workpiece weight	kgs	150	250
Power input		According to local voltage	According to local voltage
Max. current	Amp.	25	32 (64 optional)
Power capacity	KVA	3.8	3.8
Electrode diameter	mm	0.2~3.0	0.1~3.0
Machine net weight	kgs	600	800
Depth / Width / Height	mm	1100 x 1000 x 2000	1100 x 1200 x 2100

- ▶ (*300 Opt.) Distance from work table to edge of guide.
- ▶ Due to continuous research and development, all specifications and design characteristics are subject to change without prior notice.

Standard Accessories

- Ceramic guide : dia. 1.0mm * 1 pc
- Electrode tube : dia. 1.0mm * 10 pcs
- Filter * 1 pc
- Tool box : 1 set
- Electrode holder BS type * 1 pc (for 0~3.0mm)
- Rubber seals * 5 pcs
- When order Optional ATC (12 tools), it comes standard with of 3 pcs BS holders (RIVER 600 & RIVER 400)
- When order Optional AGC (4 or 8 blocks), it comes standard with 4 or 8 pcs Guide Blocks (RIVER 600 & RIVER 400)

**Best Value,
Best Investment**

*Compact with High Precision
River Series Drilling EDM Machines*

歐群科技股份有限公司
OCEAN TECHNOLOGIES CO., LTD.
41357 台中市霧峰區豐正路386巷8號
No.8, Lane. 386, Fengcheng Rd., Wufeng Dist.,
Taichung City 41357, Taiwan

TEL: +886-4-23394805 FAX: +886-4-23332038
E-mail: sunnyliao@octec.com.tw / octec@seed.net.tw



CNC Drilling EDM

River 600

Auto Work-piece Changer System



Flushing Type



Submerge Type

Extraordinary Features

- High performance Ocean Technology Controller.
- High efficient linear guide ways.
- Optional 12-station Automatic Tool Changer.
- Optional 4 or 8-block Automatic Guide Changer.
- Standard with Flushing type. (Optional: Submerge type)
- Breakthrough function (Optional)

River 350

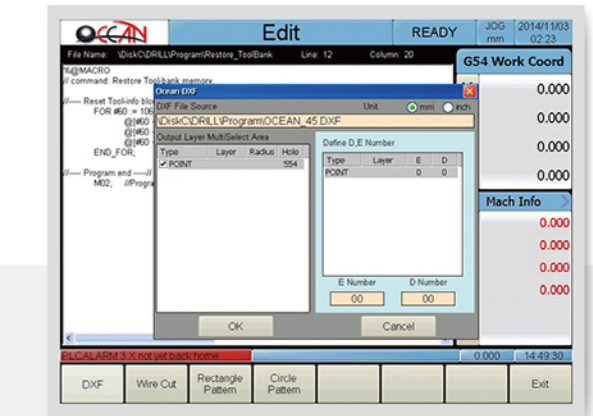
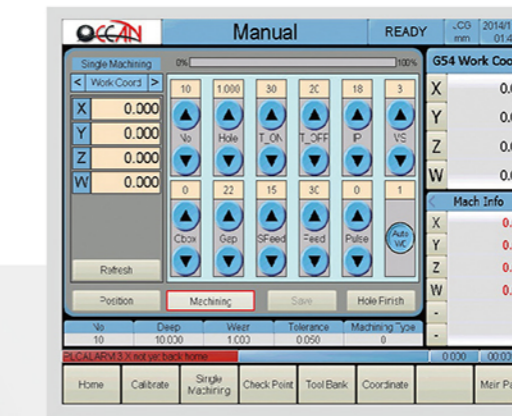
3 Axes CNC



River 300



High Performance Ocean Technology Controller



Compact Hardware and High Quality Human-Machine Interface

- 15" TFT LCD touch operation panel
- 4 axes closed-loop control (6 axes optional)
- SDRAM : 256MB, CF card 256*2 pcs
- USB storage interface

Machining Program Edit

- G/M code capacity limited 8MB (file 190,000 block)
- In load, insert, delete, save, search, copy, etc. functions
- Program simulation (for RIVER 400 & RIVER 600)
- Wire cut file transfer to NC program function
- Point coordinate input function from DXF file
- Special modular edit (circle pattern, rectangle pattern)

Machining Parameter Setting

- Machining condition library
- Machining condition table
- Machining deep table

Manual Function

- Home search
- Calibrate
- Auto edge search
- Auto centering of two points
- Auto centering of circles
- Jog function (incremental, continuous , no-guard)

NC Function

- 4 axes closed loop control (for RIVER 400 & RIVER 600)
- Servo feed rate control
- Auto Electrode Change
- Auto Guide Change
- Auto compensation of replacement new electrode
- Pitch error compensation
- Interrupt point and start point restart
- Multi-Language change
- Inch and Metric change
- Emg-Stop during precession
- Choice Program fulfill (choice range machining)
- Program machining start, pause, reset function
- Sub program
- Revised parameter during machining
- Work path display (for RIVER 400 & RIVER 600)
- Record and Show out machining time
- Software limit protect
- Dry running
- Auto error diagnose system
- Program machining rotating
- Mirror function

Machining Way

- Single hole machining and position.
- Multi-hole machining
- Single block machining ,auto machining

Coordinate Display

- Machine coordinate
- Work coordinate
- Relative coordinate